

ARES 1000 - ARES 1500

ELECTROMECHANICAL AUTOMATION FOR RACK SLIDING GATES



• **THE SLIDING GATE OPERATOR OFFER IS NOW EVEN WIDER:**

→ ARES1000 and ARES1500 operator widen the BFT range of sliding gate operators. Classed amongst the "medium-heavy" weight range, they integrate with existing products to obtain an operator that is perfectly suited to the gate every time.

• **LOW VOLTAGE MOTOR:**

→ The 24 V electrical motor guarantees maximum accuracy in torque and speed control on the one hand, and on the other makes it suitable for intensive gate use, even in industrial installations.

→ Optional battery back-up can be fitted within the operator casing.

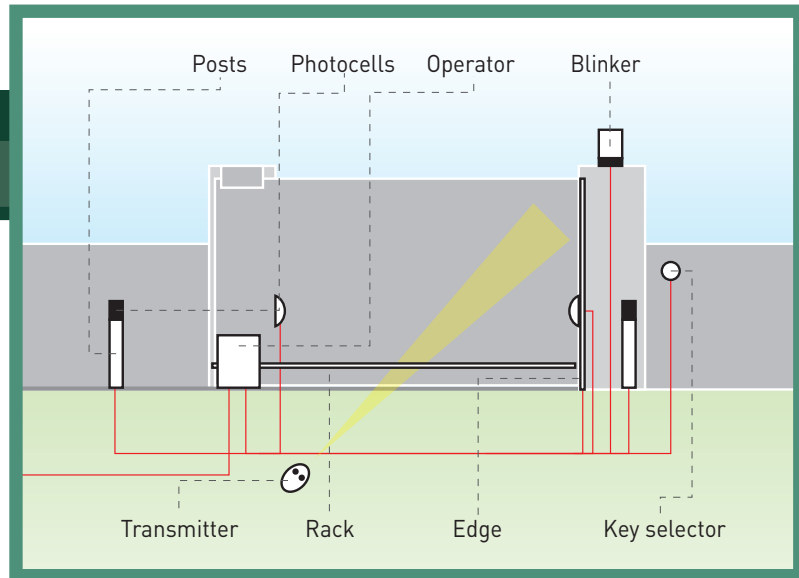


REFERENCE	DESCRIPTION	VOLTAGE	LEAF WEIGHT
P926183 00001	ARES 1000	24 V	up to 2,200 lbs (~1,000 kg)
P926182 00001	ARES 1500	24 V	up to 3,300 lbs (~1,500 kg)

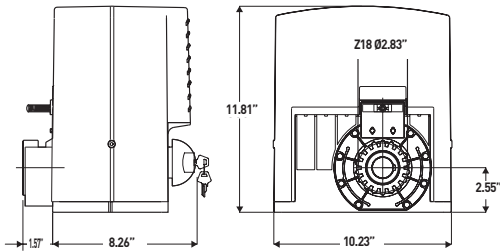
TECHNICAL FEATURES

	ARES 1000	ARES 1500
CONTROL PANEL	HQSC-D (incorporated)	HQSC-D (incorporated)
REVERSIBLE/IRREVERSIBLE OPERATOR	irreversible	irreversible
POWER SUPPLY	120V 60Hz single-phase	120V 60Hz single-phase
ABSORBED POWER	240W	250W
THERMAL PROTECTION	integrated in the control unit	integrated in the control unit
LEAF SPEED	5.9 ips (9m/min)	5.9 ips (9m/min)
OUTPUT ROTATIONAL SPEED	39rpm	39rpm
PINION PITCH	4 mm (18 teeth)	4 mm (18 teeth)
IMPACT REACTION	electronic torque limiter	electronic torque limiter
LIMIT SWITCHES	electromechanical	electromechanical
MANUAL RELEASE	mechanical release with knob	mechanical release with knob
OPERATING CYCLE	intensive use	intensive use
ENVIRONMENTAL CONDITIONS	from 5°F (-15°C) to 140°F (+60°C)	from 5°F (-15°C) to 140°F (+60°C)
DEGREE OF PROTECTION	IP24	IP24
OPERATOR WEIGHT	44 lbs (~20 kg)	44 lbs (~20 kg)
DIMENSIONS	see drawing next page	see drawing next page
FUSE VALUE (H-QSC BOARD TRANSFORMER)	0.63A T	0.63A T
FUSE VALUE (H-QSC BOARD LOGIC UNIT)	2A T	2A T

COLLECTIVE AND INDUSTRIAL USE



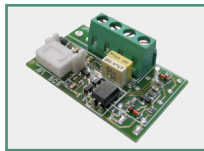
DIMENSIONS



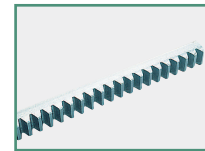
ACCESSORIES



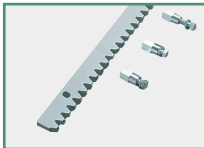
P125009 - BT-BAT 2
24 Vdc battery backup system for ARES, it includes a charger board that activates the batteries when power is off and charges the batteries when power is on.



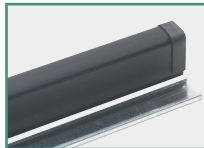
P111376 - SCS 1
Serial connection interface for QSC D UL, RIGEL 5 and LEO D. 2 SCS 1 are needed for master & slave connection.



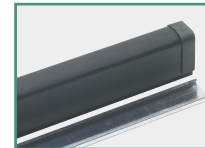
D571054 - CFZ
22x22 4mm-pitch galvanized rack. Sold in 6'6" length only.



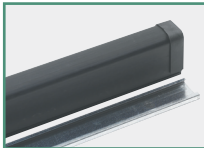
D571053 - CVZ
30x12 4mm pitch galvanized adjustable steel rack 3' 3" length.



N190039 - CSP 10
Shock absorber profile, length 3' 3".



N190040 - CSP 20
Shock absorber profile, length 6' 6".



N190041 - CSP 25
Shock absorber profile, length 8' 2".



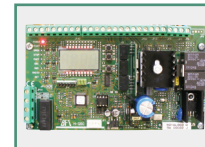
D730298 - 25 TEETH PINION
Larger pinion for increased speed (7.9ips, 12rpm). Max gate weight Ares 1000 1100lb (500Kg) & Ares 1500 1650lb (750Kg).



D531548 - KI
Blank spare key for release knob



KED113731 - ECOSOL KIT
Interface, solar panel and 15' of panel cable for running BFT control panels off 24V solar power. Includes two 12V 7.2Ah batteries and circuit board for management of commands to control panel and battery charge management, with built-in Rolling Code 433.92 MHz receiver with 63 stored positions. Features carry handle for possible quick-charging of batteries from electrical power outlet through ECOSOL CHARGER accessory.



D111862 00001 - H-QSCD 120V
Replacement board for ARES 1000 and 1500.



P121019 - T-BOX
Digital keypad with 10 channels and 100 combinations. Backlit